

Emch+
Berger

The background of the page is a collage of transportation-related images. On the left, there are several large white wind turbines. In the center, a modern, multi-story building with a glass facade is visible. To the right, a train is shown on tracks. In the foreground, a complex highway interchange with multiple lanes and overpasses is depicted. The entire collage is overlaid with a semi-transparent teal color.

Emch+Berger AG Bern
Portrait Mobility – Safety – Consulting

Overall solutions are our strength.

Our Team of Experts and Advisors Guarantee the Success of Your Project.

Advising, planning, expert studies – we support you in all project phases, from the concept to the execution.

Our Areas of Competency

Railway Systems Department

- Railway operation
- Signalling systems, ETCS
- Traffic Management Systems
- Railway technology
- Operational concepts and simulation
- Railway vehicles
- Tool development

Traffic Management Systems Department

- Tendering of large railway technology projects
- Traffic Management Systems (focus rail)
- Multidisciplinary railway technology projects with focus on railway-related IT
- Novel offer planning based on service intentions
- Business change management in connection with railway-related IT
- Management of complex IT contracts
- Formulation and management of requirements
- Interface management
- Process-oriented test and acceptance management

Safety Department

- Safety concepts, risk analyses
- RAMS studies
- Emergency situation concepts
- Screening for risk
- Major Accident Ordinance
- Tunnel safety
- Fire prevention advising up to QAS4

Project and Mobility Management Department

- Project development
- Employer support
- Construction logistics and overall project management
- Service planning, operational concepts
- Traffic control, traffic management systems
- Connected mobility
- Renewable energies

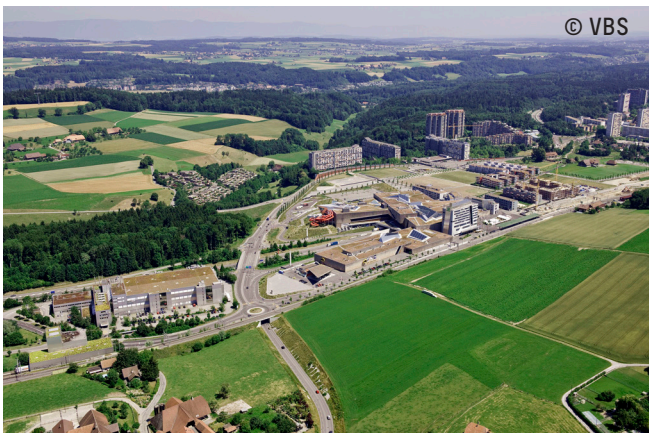
References



Lötschberg, Gotthard, Ceneri Base Tunnels

The three tunnels, with a total length of over 100 km, are writing a convincing story of success: 400 trains per day operated under ETCS, a safe and qualitatively outstanding railway operation – planned, built and brought into service on budget and schedule. Emch+Berger AG Bern are playing a major role in ETCS, safety concepts and demonstration, RAMS, logistics planning, as well as the overall coordination of all disciplines throughout all phases.

Project time frame: 1998-2020



Overall Coordination of the Bern-Brünnen Development

The city expansion of Brünnen, west of Bern, represents the successful conclusion of urban planning that has been going on for almost 50 years. It includes housing for about 2000 inhabitants, the Westside Recreation/Shopping Centre, and extensive traffic infrastructure. Emch+Berger AG Bern have accompanied the development of the project and its planning and realization, with a broad package of services on all levels. In the framework of overall coordination, Emch+Berger AG Bern was in charge of project management and overall coordination, modalities for tendering and contracts, deadline and cost control, and quality management.

Project time frame: 1999-2018



Project Development Wind Energy Park Montagne des Buttes

With 19 wind turbines, the Wind Park Montagne des Buttes covers about 10% of the electrical energy needs of the Canton of Neuchâtel. In its role as the overall planner, Emch+Berger AG Bern have been accompanying the project from the search for suitable sites up to commissioning. In addition to project management and technical design, this includes the evaluation of cost effectiveness, and negotiations with communities, landowners, municipal and cantonal authorities, environmental protection organizations, and local residents. Emch+ Berger AG Bern is coordinating approval procedures and related studies.

Project time frame: 2008-2022



ERTMS/ETCS Signalling Programme for the Danish Railways

Acting in an international joint venture, Emch+Berger AG Bern have been providing consulting and planning services for the network-wide introduction of ERMTS Level 2 in Denmark since 2007. Our technical experience, mastery of complex processes, and of introduction and accompaniment of paradigm changes form the basis for a doubling of capacity and increase in quality of Danish passenger traffic as per 2030. Emch+Berger AG Bern have been accompanying the project from the conception through the feasibility study, tendering, up to commissioning.

Project time frame: 2007-2030

Who we are:

Scan the QR code and discover the full range of services offered by Emch+Berger AG Bern:



On our website you will also find your contacts for:

- Infrastructures
- Buildings and Municipal Public Works
- Environment and Energy

Contact us. We will gladly advise you.

